

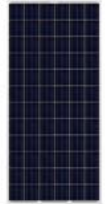






November 2011: Update on New Trina Solar Products

In our continued efforts to offer you the best solar modules and solutions in the market, we would like to inform you about the following additions to our existing product portfolio:

Mono-Series			Multi-Series			Solutions
	 <p>» NEW « Black Module (Q3 2011)</p>			 <p>Honey » NEW « Honey Module (Q4 2011)</p>		 <p>Trinamount » NEW « Trinamount (Q3 2011)</p>
TSM-DC01A	TSM-DC01A Black module	TSM-DC80 Quadmax	TSM-PC05	TSM-PC05A The Honey module	TSM-PC14 Utility scale module	Trinamount TSM-PC05.1x
<ul style="list-style-type: none"> ➤ Wattage range: 185 – 210 <u>Wp</u> ➤ Module Efficiency: up to 16.2% ➤ 72 high efficiency Mono cells 			<ul style="list-style-type: none"> ➤ Wattage range: 225 – 285Wp ➤ Module Efficiency: up to 15.9% ➤ 60, 72 high efficiency multi cells 			<ul style="list-style-type: none"> ➤ Trinamount I – For tile roof ➤ Trinamount II – For pitched roof ➤ Trinamount III – For flat roof

1. NEW: Black Module TSM-DC01A.05

Seeking to provide our customers with sleek design and **aesthetic** solutions, Trina Solar developed the NEW **black monocrystalline module**.

The TSM-DC01A.05, with power output of **185 to 195W**, combines:

1. Black mono cells with optimized corners
2. Black frame and
3. Black backsheet

The result is an aesthetically perfect solution for residential applications.



2. NEW: Honey High Efficiency Module TSM-PC05A

The **TSM-PC05A** is the latest addition to Trina Solar's premium portfolio of **multicrystalline** modules.

By applying our new Honey technology we have achieved a **world record** for a multicrystalline module (60 cells, 156x156mm cells). The module power output has been **testified by TUV Rheinland**. The Honey world record was announced at PVSEC in Hamburg in September 2011 (see picture with Ben Hill, our Head of European Operations).

The **reduced dimensions** of these modules are 1650x941x40mm, and power output ranges **from 245 to 260 Watt**.

Thanks to its **high efficiency**, this module provides high energy yield and reduced BOS cost.



3. NEW: Trinamount – Mount 5 x Faster

Combining PV module expertise with a highly innovative mounting system solution, Trina Solar is introducing Trinamount—the **fastest, easiest and least expensive** way to mount PV modules onto residential and commercial rooftops.

Pitched roof installations: Trinamount I and II

With a series of drop-in and quarter-turn connections on a specialized module frame, this mounting solution installs **up to 5 times faster than conventional mounting systems**.

Trinamount connects directly to the module frame, **eliminating the need for long rails**. By drastically reducing the number of parts, cost of materials and installation time, Trinamount offers the optimal solution for residential and commercial installations.

Trinamount I installs on pitched tile roof, while Trinamount II installs on pitched metal, standing seam or shingle roofs.

Trinamount I
by TrinaSolar



Trinamount II
by TrinaSolar



Flat roof installations: Trinamount III

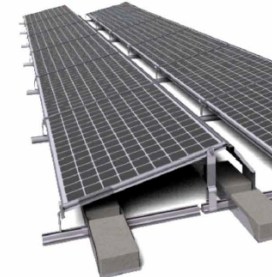
With far less complexity than conventional systems, and without needing to penetrate the roof, Trinamount III is a **ballasted system that optimizes the yield** on limited surface. It delivers both labor and logistics savings for commercial PV projects, and greatly accelerates the process of commercial rooftop installation.

Watch the videos of the Trinamount system in our YouTube channel :

<http://www.youtube.com/watch?v=TzaKsKyuYIE&feature=related>

http://www.youtube.com/watch?v=aWqqg_W6I1s

<http://www.youtube.com/watch?v=LLieJi2SvSg>



INDUSTRY LEADING WARRANTY

Trina Solar's warranty goes beyond industry standard: We offer an **extended product warranty of 10 years** (instead of 5 years) and a **linear performance warranty of 25 years** (instead of stepped warranty).



For more information, please do not hesitate to contact us.